

FIXING THE PROBLEM AT THE SOURCE

Engineered Transfer Chutes

Benetech's engineering department provides advanced engineering technologies, innovative solutions, and practical ideas that help eliminate problems, upgrade efficiency, improve safety, and ensure compliance with government regulations.

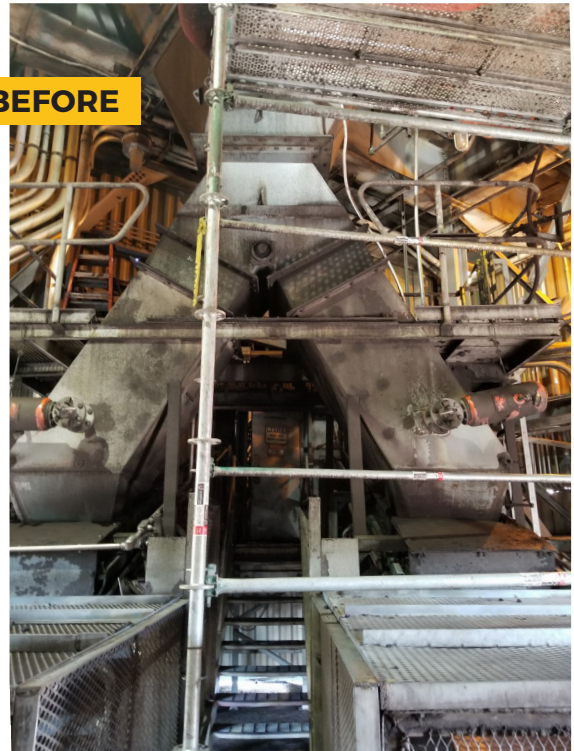
Our engineered Advanced Flow Transfer Chutes are designed and tested to perform in the most demanding applications.

After evaluating your needs, our expert engineering chute team can design, fabricate, and install a customized material handling solution to your exact requirements.

Common applications include unique transfer chutes for transfer towers, cascade conveyors, and post-crusher load zones.

By adeptly improving material flow issues, Benetech's engineered transfer chutes help prevent the generation of dust rather than just passively trying to control it.

BEFORE



AFTER



BENEFITS TO ENGINEERED CHUTES

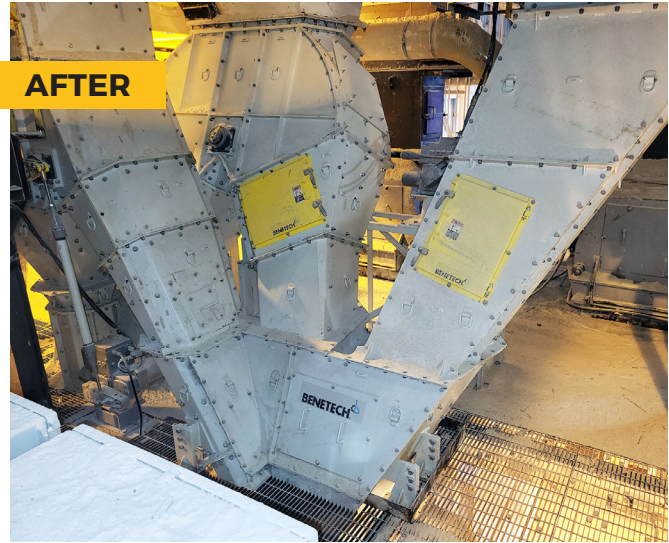
- Maximizes material throughput and ensures meeting of design flow requirements
- Minimizes spillage and airborne dust
- Reduces turbulence and high-impact for longer chute liner life
- Reduces degradation of conveyed material
- Optimizes belt life due to reduced loading impact
- Provides longer intervals between service and maintenance

 *Improves Material
Flow & Dust Control*

BEFORE



AFTER

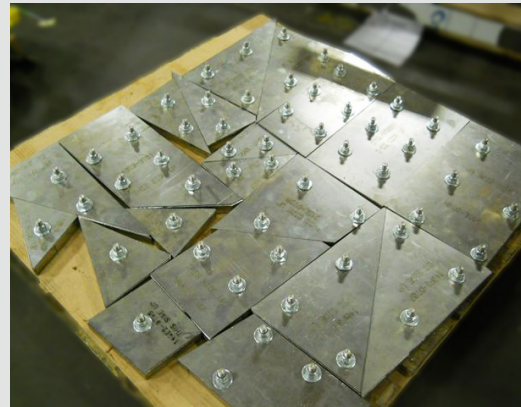


TRANSFER CHUTE WEARLINERS

Benetech offers a complete line of wear-resistant materials to handle all of the impact and abrasion challenges of bulk material. Our years of material handling experience and technical expertise ensure the right solution for you — by providing wearliners for optimal protection and superior wear life.

Wearliner Material Options

- Ceramic Tile
- UHMW Tile
- Stainless Steel
- AR-400
- Chrome Carbide
- White Iron Castings



COMMON APPLICATIONS

- Chutes and hopper liners
- Flop gate liners
- Fan housing liners
- Fan cheek liners
- Skirt liners
- Storage bins
- Bunker liners
- Silo liners
- Slider beds
- Wear strips
- Screen plates
- Grizzly bars
- Bucket liners
- Truck bed strips