

EAGLE HYDRAULIC CYLINDERS

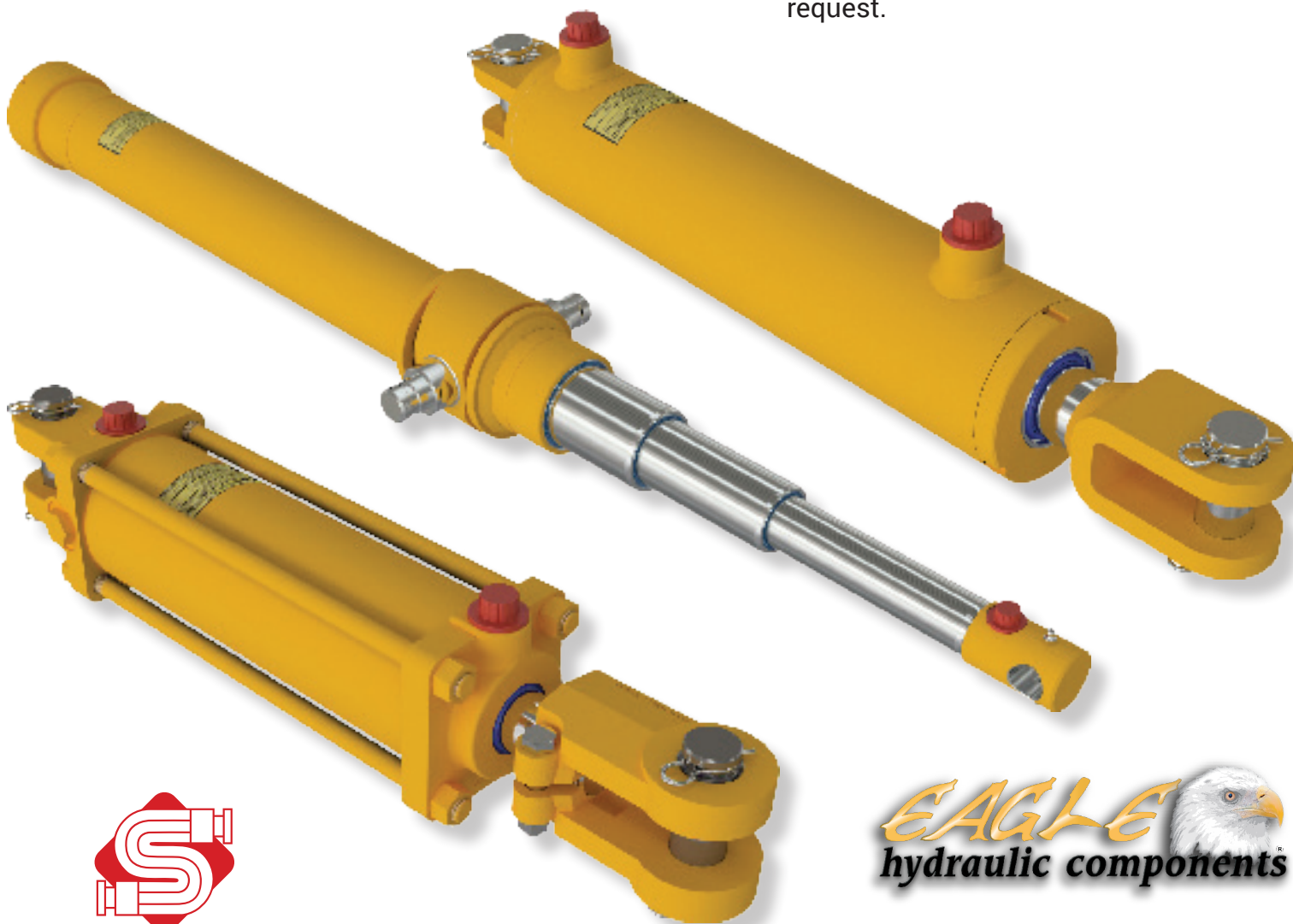
Standard Hydraulic Cylinders

Eagle offers a complete line of standard hydraulic cylinder products. We stock a range of welded body rod cylinders, tie rod cylinders as well as single acting telescopic cylinders.

We also offer the ability to customize our standard products to suit your application. We have many choices of rod and end mounts.

Standard Features

- High Quality North American Seals
- High Quality Chrome or Nitrided Rod
 - Chrome Rod rated from 96 hrs up to 200 hrs salt spray test
 - Nitride Rod rated for 150 hrs salt spray test
- High Quality Pulse Arc MIG Weld
- High Quality Paint
 - Powder coated paint available upon request.



SUMMERS
RUBBER COMPANY
A SINGER INDUSTRIAL COMPANY

EAGLE
hydraulic components 

www.SummersRubber.com

EAGLE HYDRAULIC CYLINDERS

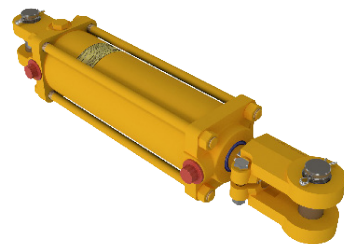
HBU: Bushing Attachment

- Pressure: 3000 PSI
- Bore: 1.0 in - 5.0 in
- Stroke: 4 in - 48 in
- Rod: 1.000 in - 2.5 in
- Retracted Length: 12 in - 60 in
- Bushing Inside Dia.: 0.75 in - 1.75 in



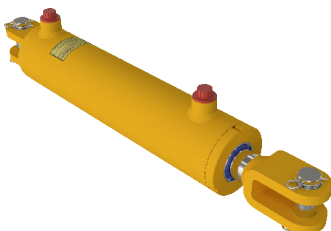
HTH: Tie-Rod Cylinder-3000 PSI

- Pressure: 3000 PSI
- Bore: 2.0 in - 5.0 in
- Stroke: 4 in - 36 in
- Rod: 1.125 in - 2.0 in
- Retracted Length: 14.25 in - 48.25 in
- Pin: 1.0 in



HCL: Clevis Attachment

- Pressure: 3000 PSI
- Bore: 2.0 in - 5.0 in
- Stroke: 4 in - 36 in
- Rod: 1.25 in - 2.5 in
- Retracted Length: 14.25 in - 48.25 in
- Pin: 1.25 in & 1.5 in



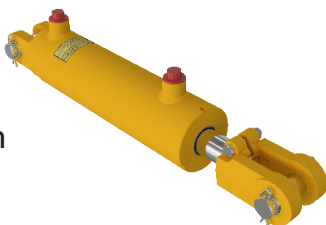
HSP: Snow Plow Cylinder

- Pressure: 2500 PSI
- Bore: 1.75 in - 2.25 in
- Stroke: 6 in - 16 in
- Rod: 1.125 in - 2.0 in
- Retracted Length: 12.375 in - 23.3125 in
- Pin: 0.625 in, 0.75 in & 1.0 in



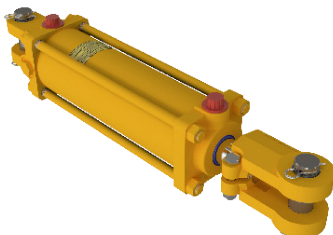
HTG: Adjustable Threaded Clevis

- Pressure: 3000 PSI
- Bore: 2.0 in - 4.0 in
- Stroke: 4 in - 36 in
- Rod: 1.125 in - 1.75 in
- Retracted Length: 14.25 in - 46.25 in
- Pin: 1.0 in



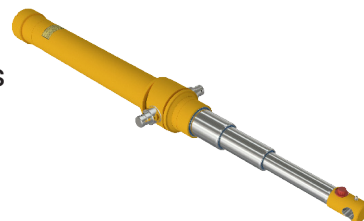
HTR: Tie-Rod Cylinder-2500 PSI

- Pressure: 2500 PSI
- Bore: 2.0 in - 5.0 in
- Stroke: 4 in - 36 in
- Rod: 1.125 in - 2.0 in
- Retracted Length: 14.25 in - 48.25 in
- Pin: 1.0 in



HTC: Telescopic Cylinders

- Pressure: 3000 PSI
- Capacity: 7 & 12 tons
- Stroke: 78 in - 120 in
- Rod: 2.0 in
- Retracted Length: 35.5 in - 48.75 in
- Pin (Rod Hole): 1.0 in



www.SummersRubber.com